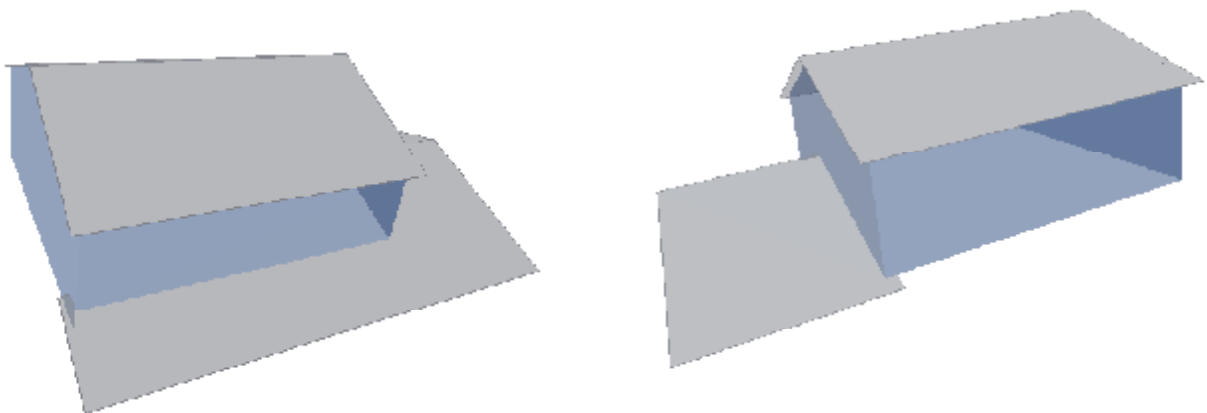
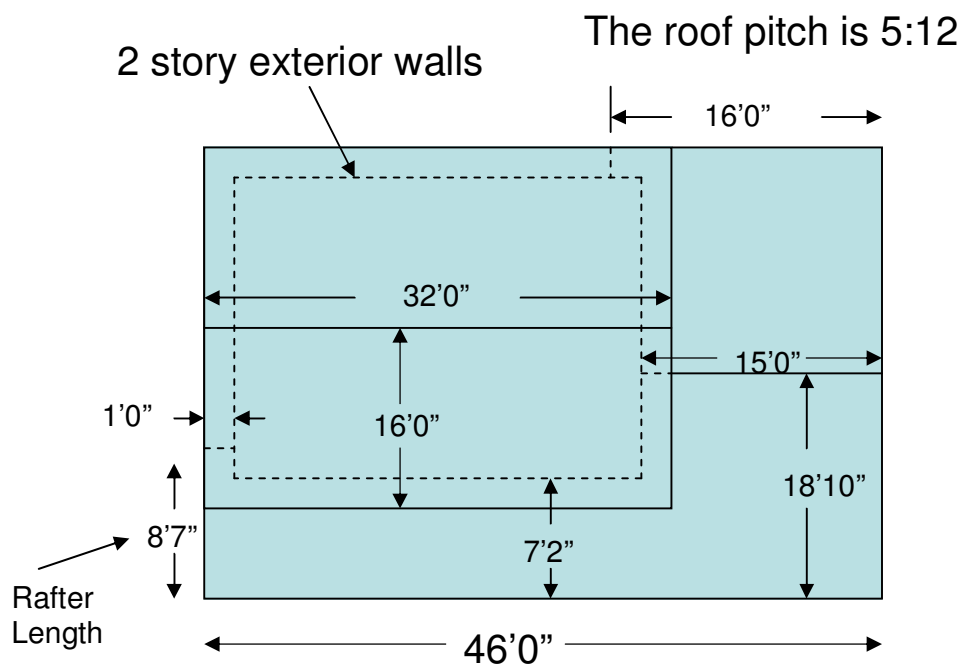


Drawing a 2 Story Ranch

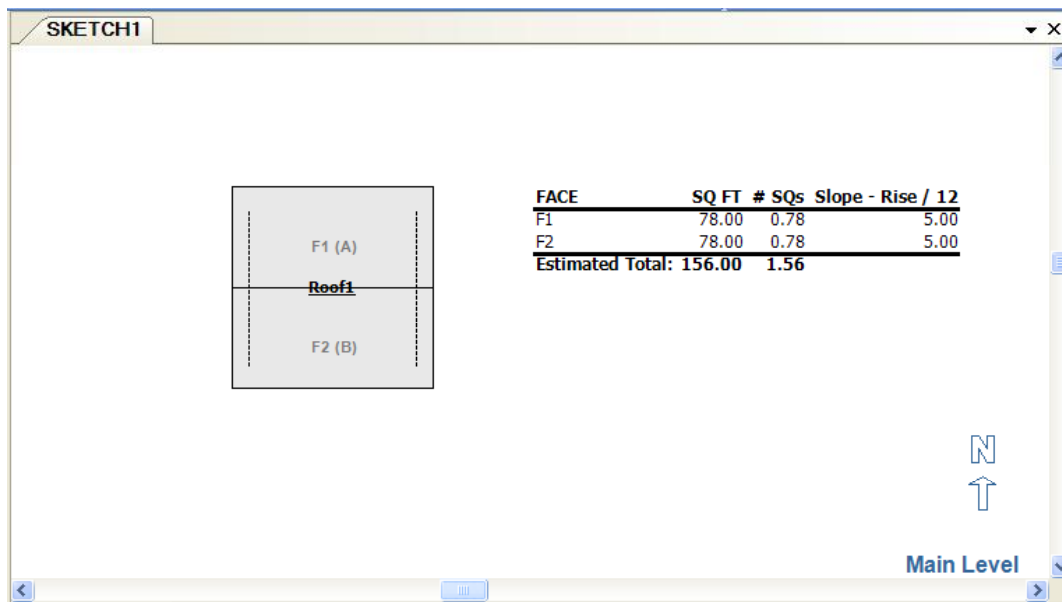
- 1) In this chapter we will discuss how to draw 1 and 2 story gable roofs. The purpose of this exercise will show you how to elevate roofs, techniques I use to align lower roofs off 2 story walls and to group all the roofs as 1 roof.
- 2) We will be drawing the following roof.



Drawing a 2 Story Ranch

- 3) Using what you have already learned. Create a new project named "2STORY_RANCH" See pages 13-14 for assistance on creating a new project.
- 4) Using what you have already learned. Place a new gable roof into the sketch window. See pages 16 & 18 for assistance on placing a new roof into the sketch window.
- 5) Using what you have already learned. Change the roof pitch to 5:12 . For assistance on how to change the roof pitch, see pages 22-24, Steps 12,14 - 16

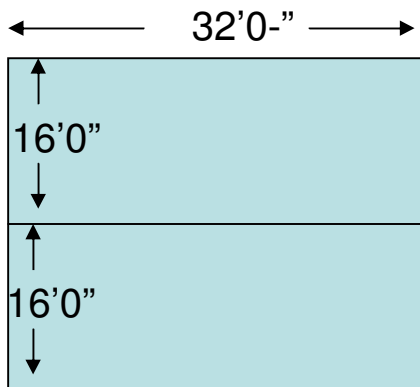
Your screen should appear similar to mine.



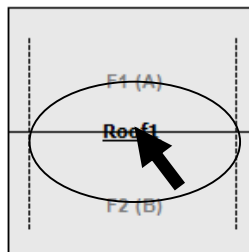
Drawing a 2 Story Ranch

- 6) Now that you have your roof pitch set, we will begin by drawing the main roof. 1st we will adjust the rafter length, then the eave length.

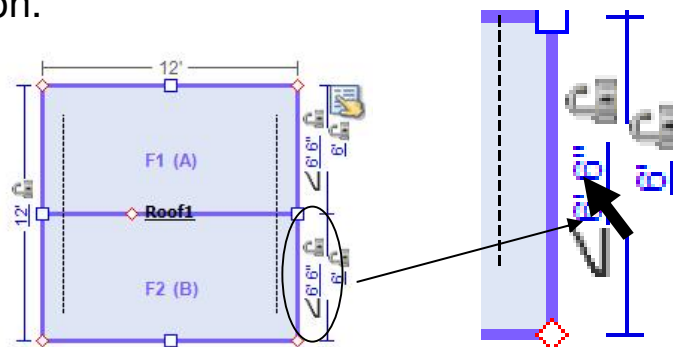
Note: In most cases, the highest ridge should always be the main roof.



- 7) With your mouse, left click on the roof name to select the roof.

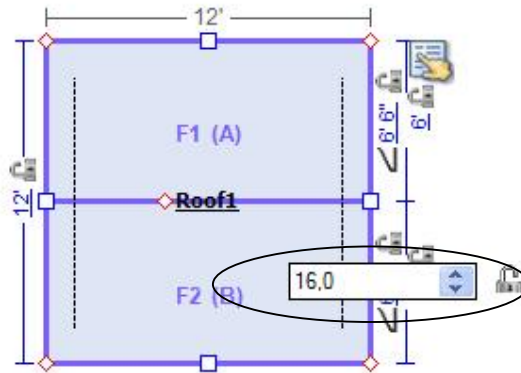


- 8) Using your mouse, left click on the rafter length dimension.



Drawing a 2 Story Ranch

- 9) Enter 16,0 (sixteen comma zero) as your rafter length, then press the “Enter” key on your keyboard.



- 10) Follow the example below. Adjust the eave length to 32 feet. “32,0 (thirty two comma zero)”

